



DESIGN ALCHEMY

AN APARTMENT IS REINVENTED TO EMBODY ALL THINGS
COOL, CALM AND COLLECTED





DETAILS
HOUSE CITY LIVING
LOCATION POTTS POINT, NEW SOUTH WALES
DATE COMMENCED 2014
DATE COMPLETED JANUARY 2015
COST UNDISCLOSED



WORDS // ANNABELLE CLOROS **PHOTOGRAPHY** // MAREE HOMER

For the chosen few, a city residence offers the crème de la crème of properties — a short trip to work, buzzing restaurants and myriad bars offering the perfect martini. But this Potts Point, Sydney, apartment was in desperate need of an update, with its last renovation completed in the '80s. And let's be honest — the last thing you want to come home to is peeling paint and a space that's dark and

unloved. That's where Mr Waller, aka interior architect Andrew Waller, comes in. Tasked with serving up a complete renovation and furniture to match, reviewing the floor plan was essential to help Andrew produce a cohesive space. "A large portion of the floor plan was dedicated to corridor space, which, in relation to the overall concept, seemed unnecessary," says Andrew. Formally a two-bedroom apartment, the space was

reconfigured to suit the homeowner, who uses the residence as a second short-term abode when working for extended periods in the CBD. Converted into a luxurious one-bedroom apartment with a study/reading room in place of the second bedroom, incorporating storage space throughout was high on the agenda, as was shaking up the bathroom and kitchen. The polished renovation of this apartment makes it the ideal canvas for furnishings.

“THE PROJECT
DEMONSTRATES
THE IMPORTANCE
OF THE PLANNED
INTERPLAY BETWEEN
THE BUILT SPACE,
INTERIOR FIT-OUT
AND FURNISHINGS
TO ACHIEVE A
SEAMLESS PRODUCT”
- ANDREW WALLER





Original materials were utilised where possible, with refurbished floorboards and timber windows injecting instant character and heritage into the apartment. Bespoke joinery was integrated throughout, and the ceiling cornices are a great example of balancing the old with the new. “The project demonstrates the importance of the planned interplay between the built space, interior fit-out and furnishings to achieve a seamless product,” says Andrew. “[It also explores] how the built material palette can be extended upon with furnishings in a non-contrived manner, having the appeal of an organic or evolved style that’s full of personality.”

In terms of aesthetic, the apartment verges on Parisian in style with a strong, masculine edge present. “The scheme needed a calming atmosphere after long working days and is neutral, with colour introduced through

the artwork and ceramics,” says Andrew. Textures play a big role here, with select furniture pieces offering layered complexity, namely the classic black Paulistano chair, which is contrasted against the bespoke Derek floor lamp designed specifically for the project by Andrew himself. In this apartment, dark is unashamedly juxtaposed with light, timber and fabric provide warmth and glass and metal inject a contemporary feel — it’s all a balancing act.

What this home shows is that good design isn’t all about grand gestures. Instead, it demonstrates that a careful and considered thought process can achieve a result that is forward-thinking and contemporary with subtle throwbacks to the original bones of a structure, entwining the two to produce the ideal home for the modern gentleman. ♡ mrwaller.com



WE LOVE THE USE OF GLASS DOTTED THROUGHOUT THE HOME, FROM THE DESK LAMP TO THE VASES

TOP LEFT Industrial shelving adds a masculine edge to the space

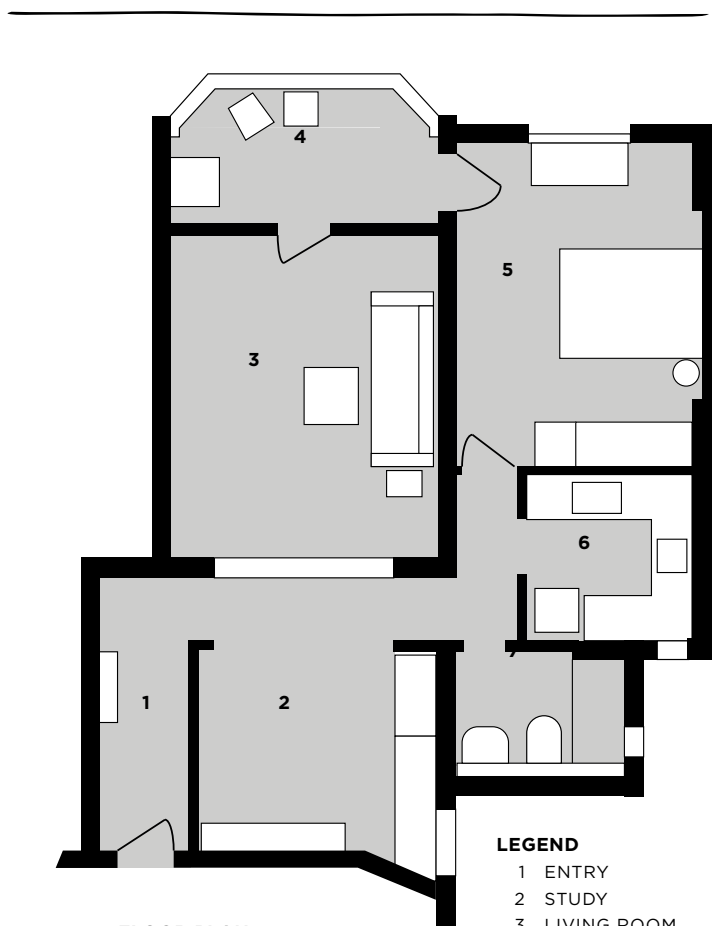
TOP RIGHT Henry Wilson’s Angle Poise LED glass lamp is eternally on-trend

OPPOSITE The bedroom comprises layers of texture that make an interesting and comfortable space to unwind in

IN THIS APARTMENT, DARK IS UNASHAMEDLY JUXTAPOSED AGAINST LIGHT, TIMBER AND FABRIC PROVIDE WARMTH AND GLASS AND METAL INJECT A CONTEMPORARY FEEL — IT'S ALL A BALANCING ACT



ED'S FAVE THE YY CHAIR BY MOROSO IS A CLASSIC DESIGN PIECE THAT SPEAKS VOLUMES



FLOOR PLAN

LEGEND

- 1 ENTRY
- 2 STUDY
- 3 LIVING ROOM
- 4 BALCONY
- 5 BEDROOM
- 6 KITCHEN
- 7 BATHROOM

PROJECT TEAM

Interior architect Andrew Waller (mrwaller.com)
Builder BFS Construction (bfsconstructions.com.au)

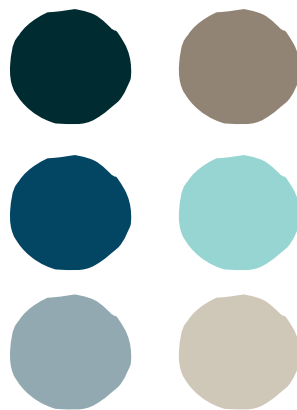
FIXTURES & FITTINGS

Fridge Liebherr SICN 3356 integrated (liebherr.com)
Dishwasher Fisher & Paykel DishDrawer DD60ST17 (fisherpaykel.com)
Oven, cooktop, microwave and rangehood Smeg (smeg.com.au)
Sink Oliveri Professional Series PR1130U (oliveri.com.au)
Kitchen tap Oliveri IP2030 Essentials (oliveri.com.au)
Washing machine Siemens WM16Y890AU (siemens-home.com.au)
Stone benchtop and tiled splashback Quantum Quartz in Storm (wk.com.au)
Walls, doors and architraves Resene Eighth Pearl Lusta (resene.com.au; resene.co.nz)
Joinery Resene Quarter Friar Grey semi-gloss (resene.com.au; resene.co.nz)

Bathroom tiles Skheme (skheme.com)
Vanity benchtop Quantum Quartz Luna White (wk.com.au)
Vanity tap City Stik B99.02.T2 (brodware.com.au)
Vanity sink O.novo (villeroy-boch.com)
Shower mixer City Stik B99.49 (brodware.com.au)
Shower head Evolve round (ramtaps.com.au)
Heated towel rail Avenir Fluid 8 (avenir.com.au)
Toilet Subway wall-face pan (villeroy-boch.com)
In-wall cisterns Parisi low level (parisi.com.au)

FURNITURE & FURNISHINGS

Downlights Smart Kup 82 IP54 LED (jsblighting.com.au)
Pendant Coco Flip (cultdesign.com)
Floor lamp Andrew Waller Derek in oak and plywood (mrwaller.com)
Desk Andrew Waller Scandinavian in oak, laminate and plywood (mrwaller.com)
Lamp Angle Poise LED with glass shade (henrywilson.com.au)
Armchair Paulistano chair (hubfurniture.com.au)
Chair Moroso (hubfurniture.com.au)

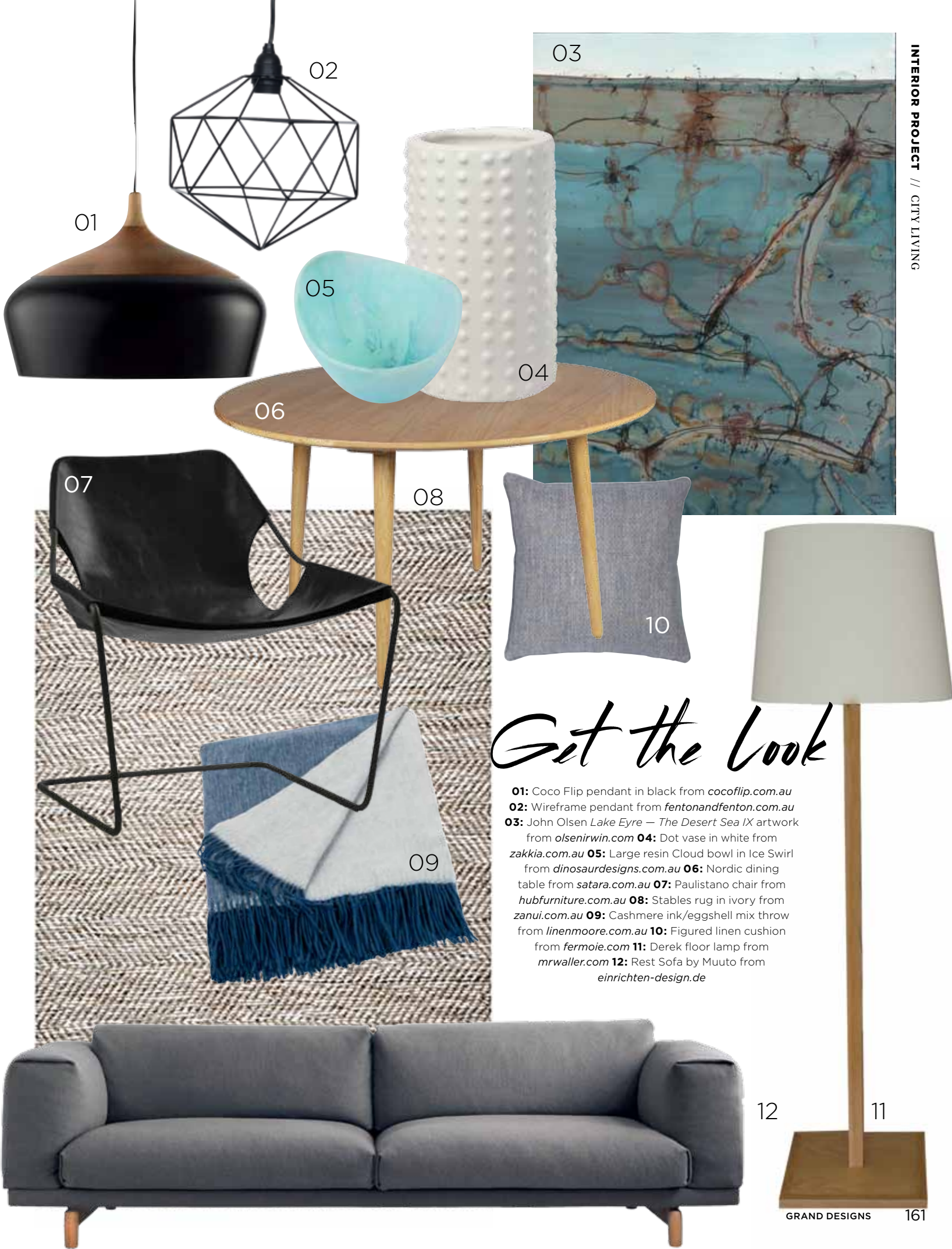


Colour Palette

Beautifully calm, this palette is subdued and sophisticated. French greys are lifted by vast amounts of white and warmed by soft browns. The denim blue and whispers of soft sea greens give a contemporary feel

Sofa Australian 1960s Parker sofa reconditioned
Dining chairs No. 14 Vienna (thonet.com.au)
Table American oak (pierreandcharlotte.com)
Marble off-cut shelving Henry Wilson (henrywilson.com.au)
Vase Bitossi Metropolis vase (hubfurniture.com.au)

Ceramic containers When Objects Work (hubfurniture.com.au)
Artwork John Olsen *Lake Eyre – The Desert Sea IX* (olsenirwin.com)
 James Harney *Untitled: Hard-Edge* (plywood artwork) (jamesharney.com.au)
 Typographic piece by Hansjörg Mayer 1966 and timber sculpture by Mark Coulston



Get the Look

- 01:** Coco Flip pendant in black from cocoflip.com.au
- 02:** Wireframe pendant from fentonandfenton.com.au
- 03:** John Olsen *Lake Eyre – The Desert Sea IX* artwork from olsenirwin.com
- 04:** Dot vase in white from zakkia.com.au
- 05:** Large resin Cloud bowl in Ice Swirl from dinosaurdesigns.com.au
- 06:** Nordic dining table from satara.com.au
- 07:** Paulistano chair from hubfurniture.com.au
- 08:** Stables rug in ivory from zanui.com.au
- 09:** Cashmere ink/eggshell mix throw from linenmoore.com.au
- 10:** Figured linen cushion from fermoie.com
- 11:** Derek floor lamp from mrwaller.com
- 12:** Rest Sofa by Muuto from einrichten-design.de